

Oct 5

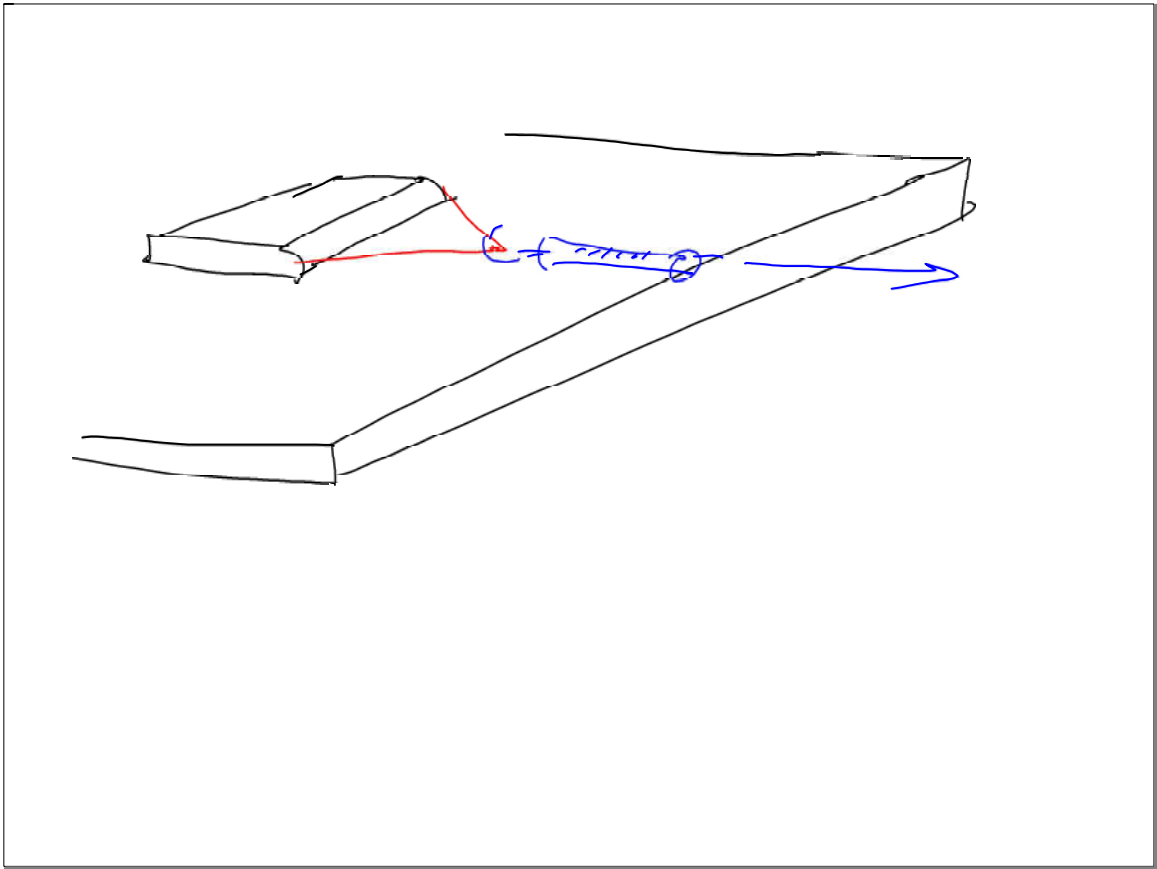
yesterday's activity —
using a spring scale
to measure ...

Mass (g)
Weight (N)

Oct 5-12:58 PM

Mass — measure of
How much inertia
Something has (gram)
weight — the force that
Gravity has on that mass
(Newton)

Oct 5-1:15 PM



Oct 5-1:22 PM

Three factors that affect friction:

1. Pressure between the surfaces

2. Texture - rougher

3. Materials - rubber has more friction than glass etc

Oct 5-1:44 PM